

TECHNICAL BULLETIN: HOW TO UTILIZE THE BACKUP AND RESTORE FEATURE

SQA-VISION VERSION 44.3.193 | August 4, 2017

BACKGROUND:

The SQA-Vision system has a backup and restore feature which can be utilized manually or on a set automatic schedule. For SQA-Vision version 44.3.193 the process has been improved for reliability and simplified for routine use. After upgrading to version 44.3.193 please follow these instructions.

BACKING UP YOUR DATA AUTOMATICALLY:

Step 1: Insert an external hard drive into an available USB port.

- **Note:** If there are no available USB ports you may use a USB Hub to connect less critical items together such as the mouse, keyboard and printer.

Step 2: Open SQA-Vision Application.

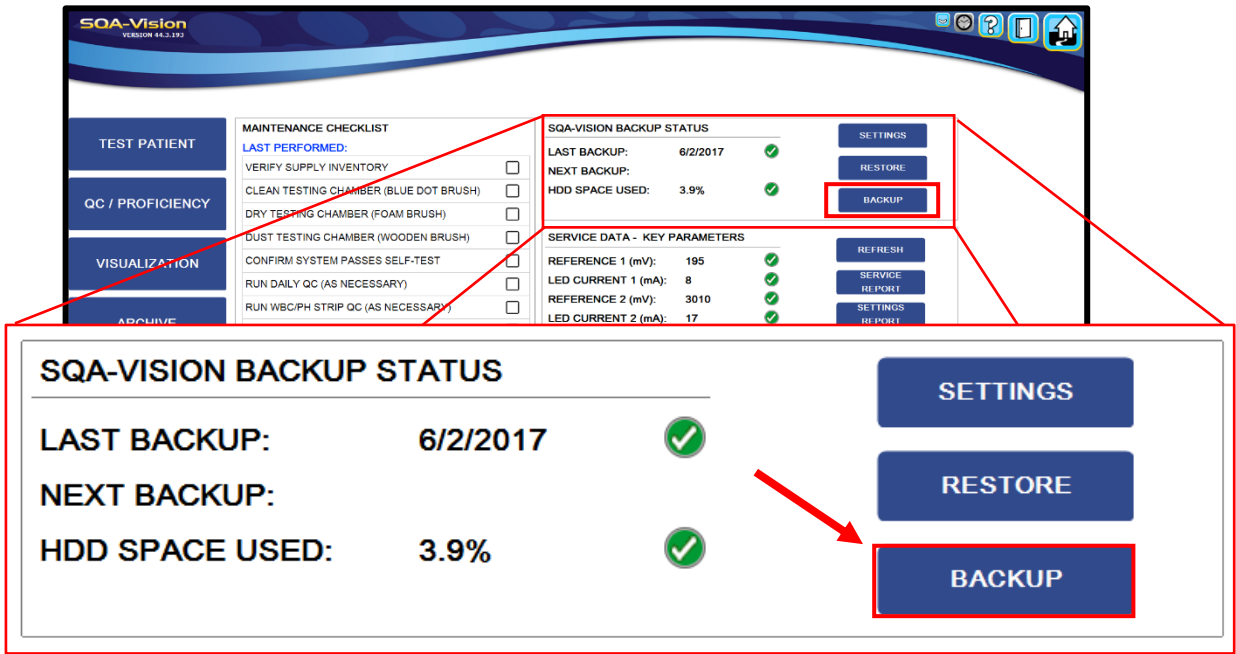
- Go into "SETTINGS" then select "SERVICE" from the top tab list. In the BACKUP FREQUENCY box indicate how often you would like the backup to run. If you do not want the system to backup automatically, leave the "BACKUP EVERY" box blank.
- **Note:** The auto-backup will begin upon shut down of the Vision application.
- Select "BROWSE" and locate the external hard drive by expanding "This PC." Select the "BACKUP (E:)" hard drive and hit "OK."

The image shows a screenshot of the SQA-Vision application interface. The main window is titled "SQA-Vision VERSION 44.3.193" and has a navigation bar with tabs: TEST PATIENT, CONTROLS, PROFICIENCY, TEST PATIENT, VISUALIZATION, SYSTEM, SERVICE, and LAB INTERFACE. The "SERVICE" tab is selected. In the "SERVICE" section, there is a "BACKUP FREQUENCY" box with "1" in the "BACKUP EVERY" field and "DAY(S)" next to it. Below this is a "BACKUP PATH" field with "E:" entered. A red box highlights the "BACKUP FREQUENCY" and "BACKUP PATH" fields, and a red arrow points to the "BROWSE" button next to the "BACKUP PATH" field. Below the main window, a "Browse For Folder" dialog box is open, showing a tree view of the file system. The "This PC" folder is expanded, and the "BACKUP (E:)" drive is selected. A red arrow points from the "BROWSE" button in the application to the "BACKUP (E:)" drive in the dialog box. The dialog box also shows other drives like "Local Disk (C:)" and "DVD RW Drive (D:)", and a list of folders and files under "This PC".



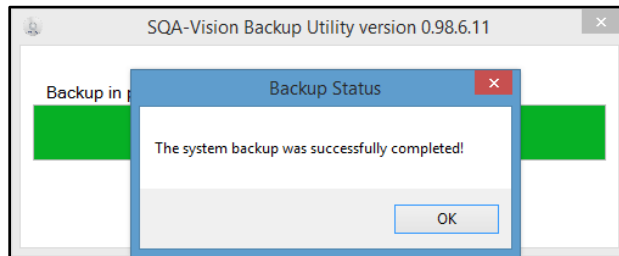
BACKING UP YOUR DATA MANUALLY:

Step 1: Go into "SERVICE" and select "BACKUP" in the SQA-VISION BACKUP STATUS box.

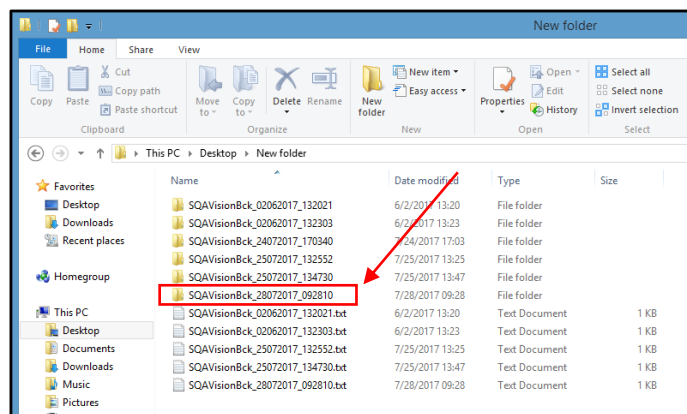


Note: The BACKUP PATH will still need to be set from the SETTINGS MENU.

Step 2: Backup will begin to copy all data to the external hard drive. Hit "OK" when complete.



- **Step 3: Verify the Backup has successfully saved your data by checking the external hard drive for the Vision backup file: Folder name: SQAVisionBck_DDMMYYYY_HHMMSS.**



RESTORING YOUR DATA:

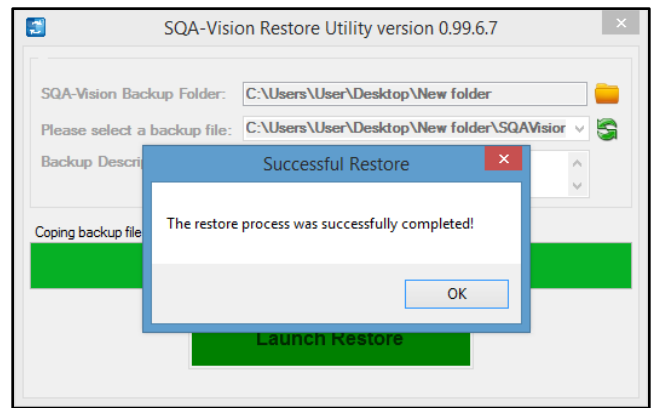
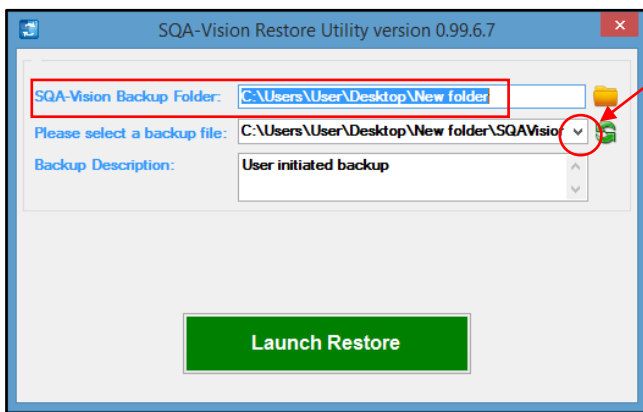
Note: In the event that your Vision PC is damaged you may restore your database to a new PC that has been loaded with the Vision Application.

Step 1: Ensure that the Vision Application is installed on an MES supplied PC.

Step 2: Ensure the MES backup external hard drive is inserted.

Step 3: Locating the backup folder.

- Open SQA-Vision application → "SERVICE" → "RESTORE".
- Select the desired backup file by clicking the drop-down arrow on the right.
- Select the file name and "Launch Restore".
- Once the restore is complete launch the Vision App and all data should be available.



Note: Restoring your data from an older backup file will overwrite your current data. It is recommended that the restore feature only be used to re-build new PCs.

If you have any further questions or concerns, please feel free to contact elizabeth@mes-llc.com

