

How to Load the I-button

Applies to the following: ALL SQA-V (V, Vb, Ve, Vp and Vt)

Issue date: March 3, 2010

Instructions:

Problem description:

I-Button Tests are not loading from the I-Button after repeated attempts and the following message is displayed on the V-Sperm screen (see Figure 1)

Explanation of the failure:

There is an intermittent I-button communication failure between the SQA-V and the computer in some cases.

Add I-Button Tests

To add tests to the SQA-V, press a new I-Button against the I-Button port of the SQA-V and click CONTINUE below.

Communication Error !

Cancel Continue >>

Figure 1: error message

Procedure for LOADING THE I-BUTTON:

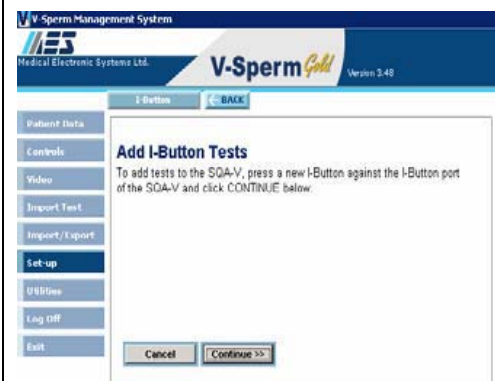
1. Turn on the SQA-V and the V-Sperm Computer
2. From the SQA-V go to: MAIN MENU > SERVICE > ADD I-BUTTON TESTS
3. Now go to the V-Sperm (or B-Sperm, or E-Sperm, etc.) and click: CONTINUE

4. PUSH and HOLD a NEW I-button against the I-button port on the left side of the SQA-V.
 - Press the button against the port
 - Press the button downward so the edges of the button and port touch each other



5. When the button is in place, go to V-Sperm and click: CONTINUE

Please Note: Make sure the I-button does not move while loading. A slight movement may cause a failure and tests will not be loaded.

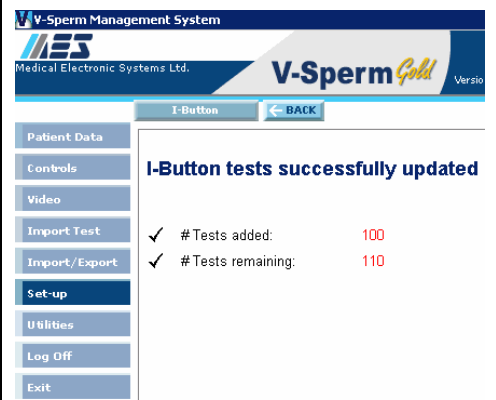


www.mes-global.com



www.a-tech-global.com

6. A progress bar can now be seen on V-Sperm.
7. **HOLD the button against the port as described above during the ENTIRE process of loading the tests until you receive a message: I-Button Tests successfully updated**



Troubleshooting Errors:

1. Click **CONTINUE** again if the I-button it doesn't load tests and you receive a communication error.



2. If you still receive a **Communication Error** check that you are:
 - **Holding the I-button against the port during the whole download?**
 - **Following every step exactly as explained in the I-button loading procedure?**
 - **Using a NEW I-button card?**
3. Is the SQA-V connected (via an RS232) to your V-Sperm Computer? (To test this- try importing your patient data...does this work?)
4. If you answered "Yes" to all of these questions, follow these instructions:
 - **Turn off the power on the SQA-V (from the back)**
 - **While holding the SERVICE button of the SQA-V, turn the power switch back on**
 - **You should now have a blank screen (sometimes with garbled lines)**
 - **Wait 5 seconds and turn off the power again.**
5. Finally turn on the power and follow the "I-button loading instructions" again (section 1- section 7 above).

